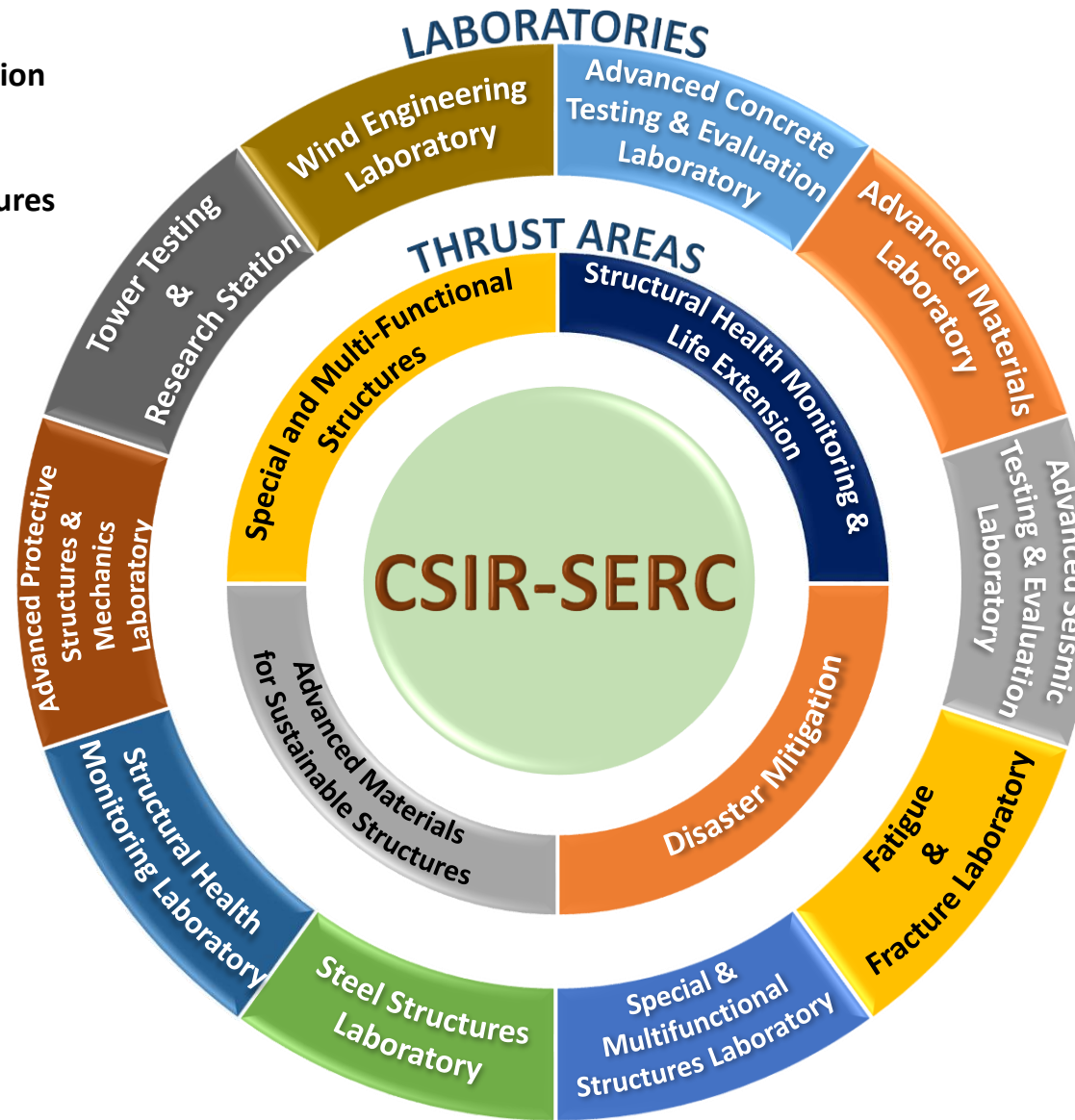


# CSIR-SERC WELCOMES CORPORATES TO INVEST CSR FUNDS IN R&D OF THE INSTITUTE

## THRUST AREAS

- ❖ Structural Health Monitoring & Life Extension
- ❖ Disaster Mitigation
- ❖ Advanced Materials for Sustainable Structures
- ❖ Special and Multi-Functional Structures



## EXPERTISE

- ❖ Computational Structural Mechanics
- ❖ Bridge Engineering
- ❖ Fatigue & Fracture
- ❖ Health Assessment Using Guided Wave Propagation
- ❖ Nano Mechanics & Engineering
- ❖ Risk & Reliability
- ❖ Shock & Vibration
- ❖ Steel Structures
- ❖ Structural Concrete Engineering
- ❖ Structural Dynamics & Engineering
- ❖ Structural Health Monitoring
- ❖ Sustainable Materials and Composites
- ❖ Wind Engineering

## CONTACT DETAILS

Dr. K. Sathish Kumar  
Chief Scientist & Head  
Business Knowledge Management & Development  
Division, CSIR-SERC,  
Chennai – 600113  
Email: [bkmd@serc.res.in](mailto:bkmd@serc.res.in)  
Phone: 044-22549145